

PART OF S.E. 1/4 OF
SECTION 17, T.6N.R.1W., S.L.B.&M.

89-1

TAXING UNIT: 25

IN OGDEN CITY
SCALE 1" = 50'

PREFIX:12-089

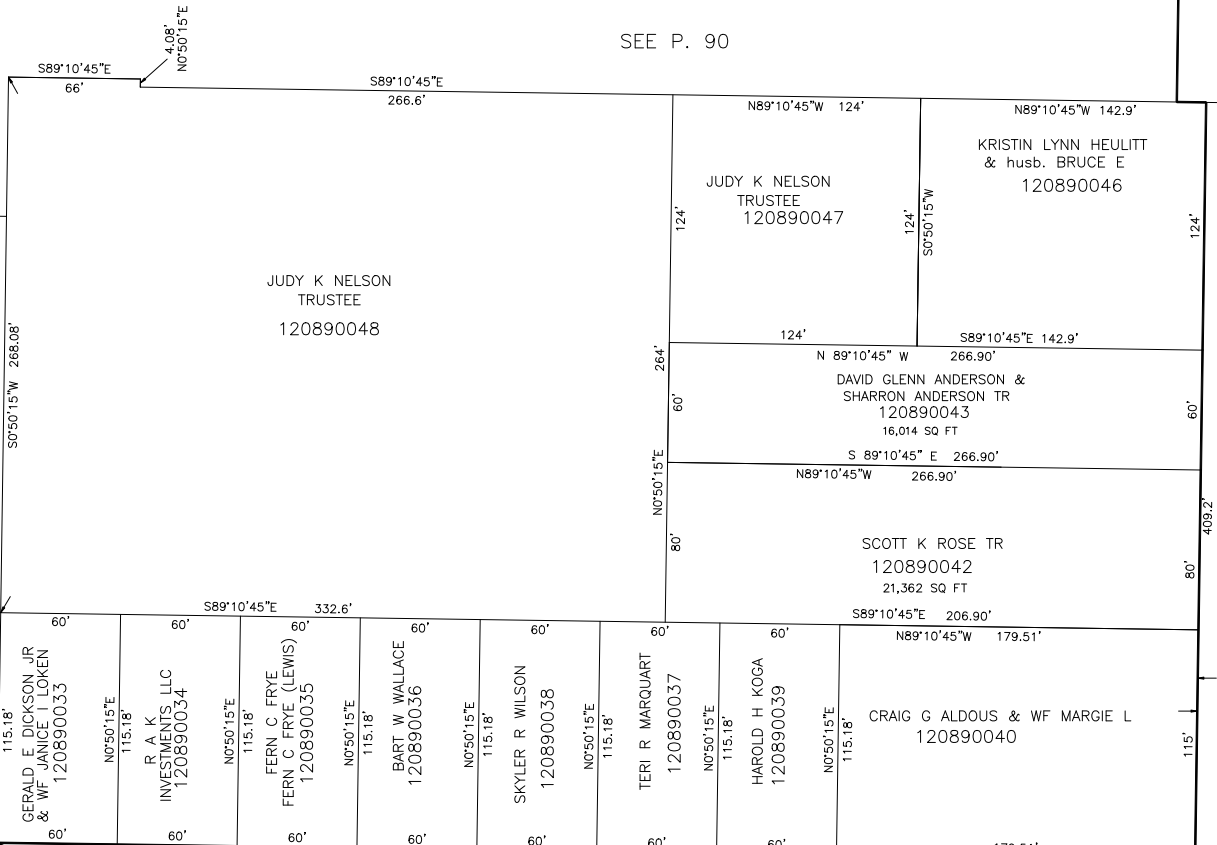
8TH STREET

S89°9'45"E

SEE P. 90

SEE P. 90

SEE P. 89



AVENUE

GRANT

120890049

OGDEN CITY

SEE P. 87

WHITE ADDITION

33'

33'

12

12

9TH

OGDEN CITY ST.

SEC. LINE = S89°10'45"E

S.E.COR. OF SEC.17

SEE PAGE 106

RB 7-69